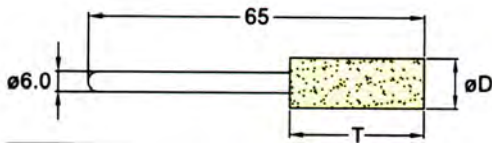


FIELTROS

PUNTA MONTADA VASTAGO 6 mm

Ideal para usar con pastas de diamante para pulido de moldes, matrices y troqueles, obteniendo el acabado deseado hasta pulido espejo

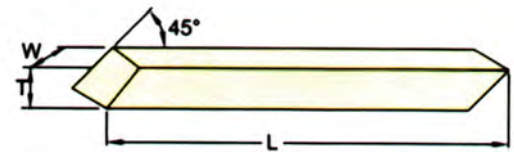
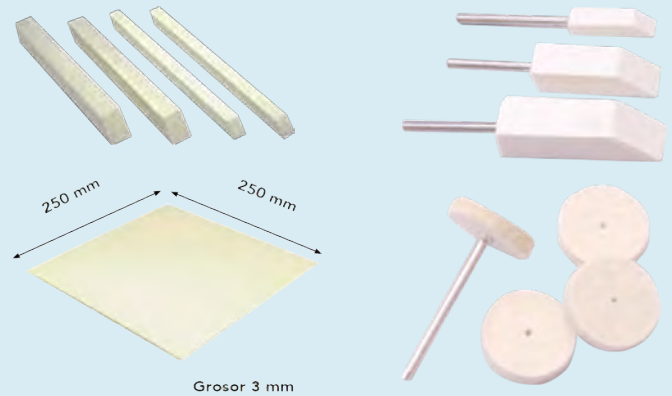
Punta montada disponible en vástago de 6.0 mm (venta individual).



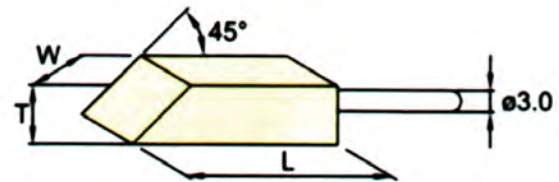
| | MODELO | ØD | T |
|--|----------|----|-----|
| | AC-1225A | 12 | 25 |
| | AC-1525A | 15 | 25 |
| | AC-2025A | 20 | 25 |
| | AC-2530A | 25 | 30 |
| | AC-1520C | 15 | 20 |
| | AC-2025C | 20 | 25 |
| | AC-2530C | 25 | 30 |
| | AC-3208E | 32 | 8 |
| | AC-4010E | 40 | 9.6 |
| | AC-1525K | 15 | 25 |
| | AC-2025K | 20 | 25 |
| | AC-2530K | 25 | 30 |

BARRA Y DISCOS VASTAGO 3 mm

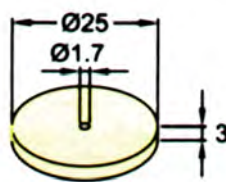
Barra de fieltro y barra con vástago de Ø3.0 mm. (Venta individual)
Discos de fieltro (paquete con 10 piezas), hoja de fieltro con adhesivo.



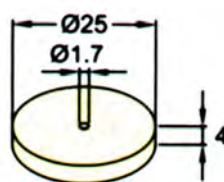
| | | |
|-----------|-------------------|---------------------|
| Order no. | AB-S06 | AB-S10 |
| W x T x L | 6 x 6 x 100 x 45° | 10 x 10 x 100 x 45° |



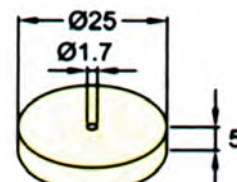
| | | | |
|-----------|------------|--------------|--------------|
| Order no. | AB-R06 | AB-R10 | AB-R12 |
| W x T x L | 6 x 6 x 25 | 10 x 10 x 35 | 12 x 12 x 45 |



AB-2503E



AB-2504E



AB-2505E